

AN ORDINANCE Relating to the Annual Budget and Amendment Thereof.

Whereas the County of MADISON has received unanticipated revenues from KENTUCKY DEPARTMENT OF ENERGY.

IT IS ORDAINED BY THE FISCAL COURT OF MADISON COUNTY THAT:

SECTION ONE: The annual budget for fiscal year ¹⁹⁸²⁻⁸³ ~~1981-82~~ is amended to:

(a) Increase receipts of the GENERAL Fund by \$ 5,529.00 to include unanticipated revenues from the Kentucky Department of Energy.

(b) Increase budget expenditures account number:

<u>71-C-9-</u>	by \$ <u>5,529.00</u>
<u> </u>	by \$ <u> </u>
<u> </u>	by \$ <u> </u>
<u> </u>	by \$ <u> </u>

SECTION TWO: The sum added to budget expenditure account(s) in SECTION ONE is appropriated for general governmental purposes.

Approved by the Fiscal Court this the 8th day of SEPTEMBER, 19 82.

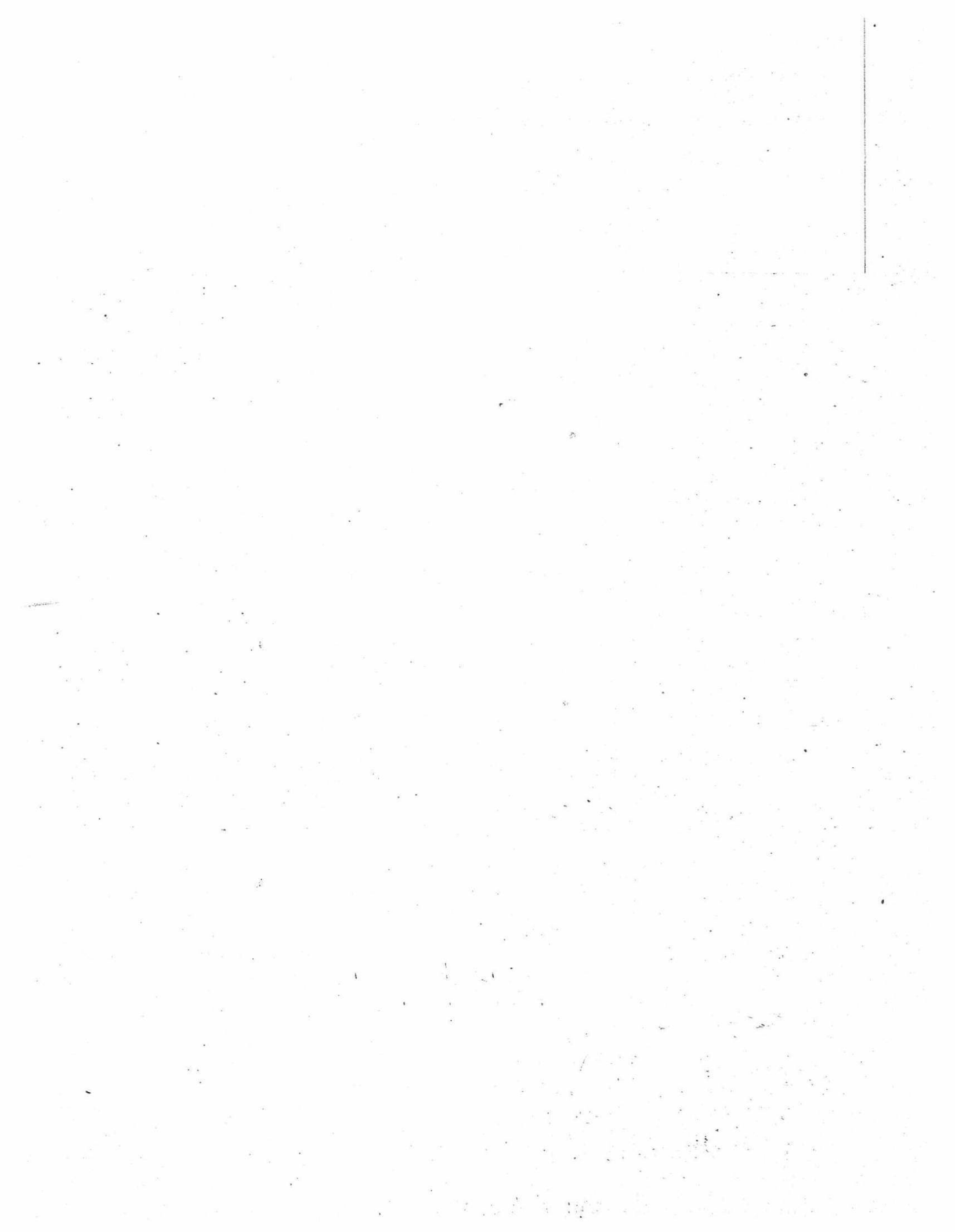
Harold K. Botner
County Judge/Executive

Approved as to form and classification this the 13th day of September, 19 82

Robert L. Curdson
State Local Finance Officer

This amendment to the Budget Ordinance and Appropriation was adopted by the Fiscal Court on the _____ day of _____, 19_____.

County Judge/Executive



AN ORDINANCE Relating to the Annual Budget and Amendment Thereof:

Whereas the County of Madison has received unanticipated revenues from Excess Bridge Funds.

IT IS ORDAINED BY THE FISCAL COURT OF Madison COUNTY THAT:

SECTION ONE: The annual budget for fiscal year ¹⁹⁸²⁻⁸³ 1981-82 is amended to:

(a) Increase receipts of the Turnpike Fund by \$ 24,212.19 to include unanticipated revenues from Excess Bridge Funds.

(b) Increase budget expenditures account number:

110-B-03A by \$ 24,212.19
_____ by \$ _____
_____ by \$ _____
_____ by \$ _____

SECTION TWO: The sum added to budget expenditure account(s) in SECTION ONE is appropriated for general governmental purposes.

Approved by the Fiscal Court this the 18th day of October, 19 82.

County Judge/Executive

Approved as to form and classification this the _____ day of _____, 19____.

State Local Finance Officer

This amendment to the Budget Ordinance and Appropriation was adopted by the Fiscal Court on the _____ day of _____, 19____.

County Judge/Executive

ATTEST: